

HARBOUR INVESTMENT FUNDS

Other Material Information Document

Issued by Harbour Asset Management Limited

18 May 2026

This document replaces the Other Material Information Document dated 1 April 2026

Contents

1. General.....	3
2. Funds.....	3
3. Manager.....	4
4. Supervisor.....	5
5. Market index information & risk indicator calculations.....	5
6. Distributions.....	8
7. Estimates for fund charges reported in the PDS.....	9
8. Information on other relevant policies.....	12
9. Taxation.....	13
10. Investing through service including platforms.....	15
11. Risks.....	15
12. Financial statements and auditor’s report.....	20
13. No Guarantee.....	20
14. Material contracts.....	20
15. Deferral and suspension of withdrawals.....	21
Disclaimers.....	22

1. General

This Other Material Information Document (Document) has been prepared to meet the requirements of section 57(1)(b)(ii) of the Financial Markets Conduct Act 2013 (FMC Act) and clause 52 of Schedule 4 of the Financial Markets Conduct Regulations 2014 (FMC Regulations). You should read this in conjunction with the Product Disclosure Statements (PDS) and Statement of Investment Policy and Objectives (SIPO) for the Harbour Investment Funds. If you are a “retail investor” under the FMC Act, you must be given a copy of the relevant PDS before we can accept your application for units.

All legislation referred to in this Document can be viewed at www.legislation.govt.nz.

In this Document, "you" or "your" refers to a person or entity that invests in the Harbour Investment Funds, whether directly or through a Portfolio Investor Proxy (PIP) platform or similar administration and custodial service. If you hold units through a platform or similar administration and custodial service, please note section 10 "Investing through platforms" on page 15. "We", "us", "our", "Harbour" or "the Manager" refers to Harbour Asset Management Limited. Words defined in the PDS have the same meaning when used in this Document, unless they are otherwise defined in this Document.

2. Funds

The Harbour Investment Funds has 20 investment funds (Funds) on offer, as listed below

Harbour Enhanced Cash Fund
Harbour NZ Core Fixed Interest Fund
Harbour NZ Corporate Bond Fund
Harbour Income Fund
Harbour Long Short Fund
Harbour NZ Index Shares Fund*
Harbour Sustainable NZ Shares Fund
Harbour Real Estate Investment Fund
Harbour Australasian Equity Income Fund
Harbour Balanced Fund
Harbour Balanced Growth Fund†
Harbour Growth Fund
Harbour Australasian Equity Fund
Harbour Australasian Equity Focus Fund
Harbour T. Rowe Price Global Equity Fund**
Harbour T. Rowe Price Global Equity Fund (Hedged)
Epoch Global Quality Select Equity Fund
Epoch Global Quality Select Equity (Hedged) Fund
Harbour Active Multi-Manager Global Equity Fund (available from 1 July 2026)
Harbour Active Multi-Manager Global Equity Fund (Hedged) (available from 1 July 2026)

* The Harbour NZ Equity Advanced Beta Fund transitioned to the Harbour NZ Index Shares Fund on 1 April 2021.

** The T. Rowe Price Global Equity Growth Fund changed name to the Harbour T. Rowe Price Global Equity Fund on 1 October 2021.

† The Harbour Active Growth Fund changed name to the Harbour Balanced Growth Fund on 21 November 2025.

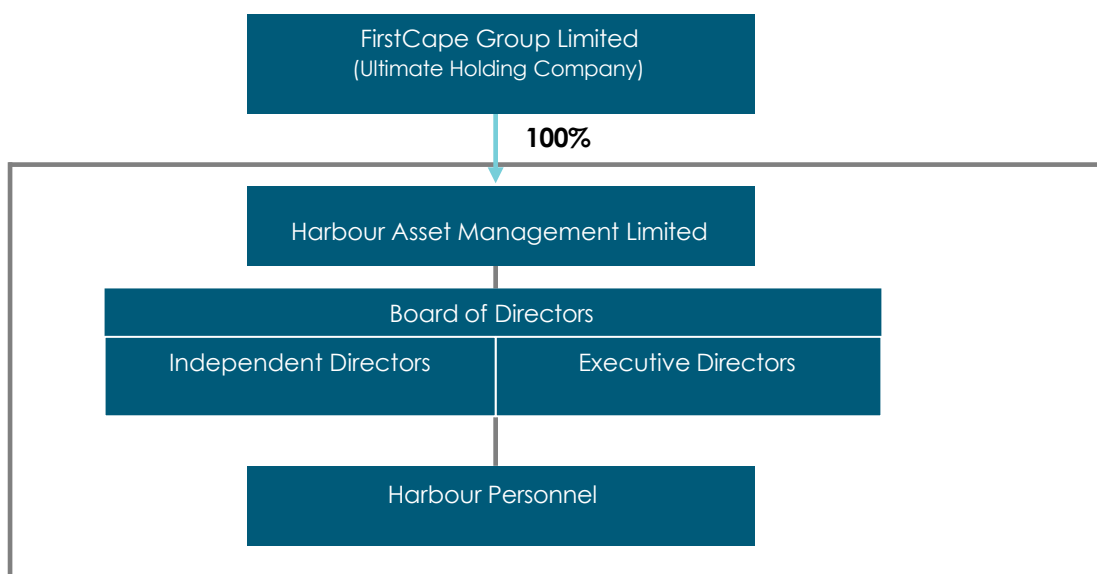
The Funds are constituted within a registered scheme called the "Harbour Investment Funds", registered scheme number SCH10815 (Scheme). The Scheme is governed by the revised Trust Deed dated 21 September 2016 and the Funds are invested in accordance with their SIPO dated 18 May 2026. You can get an electronic copy of the Trust Deed and SIPO from the scheme register on Disclose (<https://disclose-register.companiesoffice.govt.nz/>).

3. Manager

The Manager of the Funds is Harbour Asset Management Limited. We were incorporated in New Zealand under the Companies Act 1993 on 11 April 2006 as FNZC Nominees Limited and we changed our name to Harbour Asset Management Limited on 1 December 2009.

Harbour is part of a group of investment and advisory businesses ultimately owned by FirstCape Group Limited (FirstCape). FirstCape is jointly owned by National Australia Bank Limited (NAB), Jarden Wealth and Asset Management Holdings Limited (Jarden) and funds managed by Pacific Equity Partners (PEP). NAB is a licensed bank in Australia and is the parent company of Bank of New Zealand (BNZ). We are responsible for the investment management and administration of the Funds.

We were granted a licence to act as the manager of a registered scheme under the FMC Act by the Financial Markets Authority (FMA) on 30 January 2015. Harbour need to maintain the same or better standards of capability, governance and compliance as was the case when the FMA assessed our licence application. The licence is subject to the normal conditions imposed under the FMC Act and the FMC Regulations, and the standard conditions imposed by the FMA.



Our Board of Directors

Our Directors

The names of our directors can be obtained from the Companies Office website at <https://companies-register.companiesoffice.govt.nz/> or on the Harbour website at <https://www.harbourasset.co.nz/about-us/our-team/>

Harbour's directors may change from time to time.

We and our directors can be contacted at:

Harbour Asset Management Limited

Level 16, 171 Featherston Street
PO Box 3363, WELLINGTON 6140

Telephone: 0800 460 830

E-mail: contactus@harbourasset.co.nz

4. Supervisor

The New Zealand Guardian Trust Company Limited (Guardian Trust) is the Supervisor for the Funds (Supervisor).

A current list of the directors of the Supervisor is available online at <https://companies-register.companiesoffice.govt.nz/>. The directors of the Supervisor may change from time to time without notice to you.

5. Market index information & risk indicator calculations

Each Fund's returns are measured against various market indices as set out in the SIPO. These are below. Where the Funds have not been running for 5 years, the below indices have been used to calculate the risk indicator.

Appropriate Market Index for Harbour Investment Funds

Some of the underlying funds that the Harbour Investment Funds invest in hold assets for which no appropriate market index exists. In these cases, there is also no suitable peer group index that would be useful to investors in assessing the performance of either the relevant assets or the Fund as a whole.

Where a portion of a Fund invests into such assets (relevant assets), the Fund cannot practically apply a benchmark return for those assets. The benchmark return for the Fund is therefore calculated excluding any allocation to relevant assets that have no appropriate or suitable peer group index.

For example, the Harbour Growth Fund has a 3% allocation to New Zealand Private Credit. As there is no appropriate market index and no suitable peer group index for this asset class, this allocation is excluded from the benchmark calculation. The remaining benchmark components are then re-weighted proportionately to reflect the Fund's neutral asset allocation. We consider this treatment more transparent and more consistent with the purpose of the market index requirement, which is to provide a benchmark that is independent, representative, and useful to investors when assessing the Fund's performance.

Where all underlying assets have an appropriate market index, the benchmark return disclosed in fund updates will represent a composite of those indices weighted according to the Fund's strategic asset allocation.

Harbour Enhanced Cash Fund

Inception date of Fund: 1 August 2019 (transitioned to a retail unit trust on this date, Fund previously running as a wholesale unit trust since 27 April 2012).

Benchmark: S&P/NZX Bank Bills 90-Day Index.

Harbour NZ Core Fixed Interest Fund

Inception date of Fund: 24 May 2011.

Benchmark: Bloomberg NZ Bond Composite 0+Yr Index.

Harbour NZ Corporate Bond Fund

Inception date of Fund: 28 February 2009.

Benchmark: S&P/NZX Investment Grade Corporate Bond Total Return Index.

Harbour Income Fund

Inception date of Fund: 28 October 2015.

Benchmark: 68% S&P/NZX A Grade Corporate Bond Total Return Index; 16% S&P/ASX 200 Industrials Index (100% hedged to NZ Dollars); and 16% S&P/NZX Portfolio Index.

Appropriate market index used in fund updates: 64.44% S&P/NZX A Grade Corporate Bond Total Return Index; 17.77% S&P/ASX 200 Industrials Index (100% hedged to NZ Dollars); and 17.77% S&P/NZX Portfolio Index.

Harbour NZ Index Shares Fund

Inception date of Fund: 3 December 2014. The Fund transitioned from the Harbour NZ Equity Advanced Beta Fund (inception date 3 December 2014) to the Harbour NZ Index Shares Fund on 1 April 2021.

Benchmark: Solactive New Zealand Top 50 Capped Index (including imputation credits).

Harbour Sustainable NZ Shares Fund

Inception date of Fund: 1 April 2021.

Benchmark & market indices used to calculate risk indicator prior to inception date: S&P/NZX 50 Portfolio Index (gross including imputation credits).

Harbour Australasian Equity Income Fund

Inception date of Fund: 1 November 2011.

Benchmark: 60% S&P/ASX Industrials Index (equally weighted and 90% hedged NZD) and 40% S&P/NZX 50 Portfolio Index.

Harbour Australasian Equity Fund

Inception date of Fund: 11 April 2010.

Benchmark: S&P/NZX 50 Index gross including imputation credits.

Harbour Australasian Equity Focus Fund

Inception date of Fund: 10 April 2014.

Benchmark: 50% S&P/NZX 50 Index (gross including imputation credits) and 50% S&P/ASX 200 (which is total return in AUD with 50% hedged into NZ dollars).

Harbour Real Estate Investment Fund

Inception date of Fund: 1 October 2018.

Benchmark: S&P/NZX All Real Estate Index.

Harbour Long Short Fund

Inception date of Fund: 3 January 2019.

Benchmark: 15% S&P/NZX 50 Index, 15% S&P/ASX 200 Index & 70% S&P/NZX Bank Bills 90-Day Index.

Harbour Balanced Fund

Inception date of Fund: 21 November 2025.

Benchmark: 5% S&P/NZX Bank Bills 90-Day Total Return Index, 9% Bloomberg NZBond Composite 0+ Yr Index, 4.8% Bloomberg Global Agg Corporate Total Return (100% hedged NZD), 5.2% Bloomberg Global Agg Treasury Total Return (100% hedged NZD), 13% Bloomberg Global Agg Total Return (100% hedged NZD), 3% NZ Official Cash Rate + 4%, 40% MSCI All Country World Index (50% hedged to NZD), 20% S&P/NZX 50 Index Gross with Imputation Credits.

Appropriate market index used in fund updates: 5.15% S&P/NZX Bank Bills 90-Day Total Return Index, 9.28% Bloomberg NZBond Composite 0+ Yr Index, 4.95% Bloomberg Global Agg Corporate Total Return (100% hedged NZD), 5.36% Bloomberg Global Agg Treasury Total Return (100% hedged NZD), 13.40% Bloomberg Global Agg Total Return (100% hedged NZD), 20.62% MSCI All Country World Index (unhedged) in NZD, 20.62% MSCI All Country World Index Net (100% hedged to NZD), 20.62% S&P/NZX 50 Index Gross with Imputation Credits.

Harbour Balanced Growth Fund

Inception date of Fund: 1 November 2019.

Benchmark: 3.5% S&P/NZX Bank Bills 90-Day Total Return Index, 6.5% Bloomberg NZBond Composite 0+ Yr Index, 3.4% Bloomberg Global Agg Corporate Total Return (100% hedged NZD), 4.6% Bloomberg Global Agg Treasury Total Return (100% hedged NZD), 9% Bloomberg Global Agg Total Return (100% hedged NZD), 3% NZ Official Cash Rate + 4%, 46.5% MSCI All Country World Index (50% hedged to NZD), 23.5% S&P/NZX 50 Index Gross with Imputation Credits.

Appropriate market index used in fund updates: 3.61% S&P/NZX Bank Bills 90-Day Total Return Index, 6.70% Bloomberg NZBond Composite 0+ Yr Index, 3.50% Bloomberg Global Agg Corporate Total Return (100% hedged NZD), 4.74% Bloomberg Global Agg Treasury Total Return (100% hedged NZD), 9.28% Bloomberg Global Agg Total Return (100% hedged NZD), 23.97% MSCI All Country World Index (unhedged) in NZD, 23.97% MSCI All Country World Index Net (100% hedged to NZD), 24.23% S&P/NZX 50 Index Gross with Imputation Credits.

Harbour Growth Fund

Inception date of Fund: 21 November 2025.

Benchmark: 2% S&P/NZX Bank Bills 90-Day Total Return Index, 4% Bloomberg NZBond Composite 0+ Yr Index, 2% Bloomberg Global Agg Corporate Total Return (100% hedged NZD), 4% Bloomberg Global Agg Treasury Total Return (100% hedged NZD), 5% Bloomberg Global Agg Total Return (100% hedged NZD), 3% NZ Official Cash Rate + 4%, 53% MSCI All Country World Index (50% hedged to NZD), 27% S&P/NZX 50 Index Gross with Imputation Credits.

Appropriate market index used in fund updates: 2.06% S&P/NZX Bank Bills 90-Day Total Return Index, 4.12% Bloomberg NZBond Composite 0+ Yr Index, 2.06% Bloomberg Global Agg Corporate Total Return (100% hedged NZD), 4.12% Bloomberg Global Agg Treasury Total Return (100% hedged NZD), 5.16% Bloomberg Global Agg Total Return (100% hedged NZD), 27.32% MSCI All Country World Index (unhedged) in NZD, 27.32% MSCI All Country World Index Net (100% hedged to NZD), 27.84% S&P/NZX 50 Index Gross with Imputation Credits.

Harbour T. Rowe Price Global Equity Fund

Inception date of Fund: 21 October 2015. Fund name changed from T. Rowe Price Global Equity Growth Fund to Harbour T. Rowe Price Global Equity Fund on 1 October 2021.

Benchmark: MSCI All Country World Index (unhedged) in NZD.

Harbour T. Rowe Price Global Equity Fund (Hedged)

Inception date of Fund: 1 October 2021.

Benchmark & market indices used to calculate risk indicator prior to inception date: MSCI All Country World Index (100% hedged to NZD).

Epoch Global Quality Select Equity Fund

Inception date of Fund: 12 July 2024.

Benchmark & market indices used to calculate risk indicator prior to inception date: MSCI All Country World Index (unhedged) in NZD.

Epoch Global Quality Select Equity (Hedged) Fund

Inception date of Fund: 30 October 2024.

Benchmark & market indices used to calculate risk indicator prior to inception date: MSCI All Country World Index (100% hedged to NZD).

Harbour Active Multi-Manager Global Equity Fund

(This Fund will be available for investment from 1 July 2026).

Inception date of Fund: 1 July 2026.

Benchmark & market indices used to calculate risk indicator prior to inception date: MSCI All Country World Index (unhedged) in NZD.

Harbour Active Multi-Manager Global Equity Fund (Hedged)

(This Fund will be available for investment from 1 July 2026).

Inception date of Fund: 1 July 2026.

Benchmark & market indices used to calculate risk indicator prior to inception date: MSCI All Country World Index (100% hedged to NZD).

For more information on the indices see below links:

S&P/NZX Indices: <https://www.spglobal.com/spdji/en/regional-exposure/asia-pacific/#indices>

S&P/ASX Indices: <https://www.asx.com.au/markets/trade-our-cash-market/overview/indices>

MSCI Indices: <https://www.msci.com/indexes>

Bloomberg Indices: <https://www.bloomberg.com/professional/product/indices/>

Solactive Indices: <https://www.solactive.com/indices/#page-section-1>

Disclaimers: Our use of some market indices is subject to terms and conditions of licence agreements entered into with the index provider. These require us to provide certain disclaimers in relation to our use of those market indices. We set out these disclaimers at the end of this Document.

6. Distributions

We reserve the right to amend the distribution policy. As soon as practicable after the end of every distribution period, we must determine the amount of income available for distribution for that distribution period, for those Funds where income will be distributed. We can elect to capitalise some income. Your total income entitlements for a distribution period are calculated by taking the

income we determine is available for distribution, dividing that figure by the number of units on issue at the end of the last day of that distribution period, and multiplying that number by the number of units you held at the end of the last day of the distribution period. The Fund may elect to deduct from your distribution an amount equal to the PIE tax (if any) paid by the Fund in respect of your holding. In such a case, unit holders may receive differing net distributions.

Currently, however, the Funds intend to reflect PIE tax by adjusting your units held and not by making deductions from distributions.

No amount of return is promised.

Depending on which service the investor is using, it may be possible for investors to have the option to have all of the distribution income paid to a nominated bank account or reinvested in further units. Please check with your service provider regarding this.

7. Estimates for fund charges reported in the PDS

The total annual fund charges listed in the PDS for each Fund are estimates and exclude GST (if any). They include fees and expenses expected to be incurred by the Fund (and any underlying funds in which it invests) under normal operating conditions. They generally do not include transaction costs.

These total annual fund charges are broken down into 'management fees' (which is further broken down into 'net fees' and 'other fees') and 'performance fees'. These fees are presented as estimates.

To the extent that is possible, we are required to disclose actual fees and costs for the Fund. This includes the actual fees and costs of any underlying fund in which a Fund invests. Where actual figures are not available, Harbour instead uses our best estimate of these amounts.

Management fee

The management fee disclosed in the PDS may include (but is not limited to):

- The fee charged by Harbour for management of the relevant Fund;
- The fee charged by any non-related underlying fund;
- The fee (excluding performance fees) charged by any related underlying Fund;
- Supervisor fees;
- Fees for outsourced functions such as registry and unit pricing;
- Provisions for legal and audit costs.

In some instances, such as for performance fees charged by non-related underlying funds, or fixed dollar or estimate costs in underlying funds, Harbour may use a best estimate when determining the management fee. The actual fee incurred by an investor in the Fund over any period may differ from the disclosed fee.

As at the date of this document, the management fee of the following Funds includes an estimate of performance fees for underlying non-related funds:

- Harbour Balanced Fund;
- Harbour Balanced Growth Fund; and
- Harbour Growth Fund.

The Harbour NZ Core Fixed Interest Fund, the Harbour Australasian Equity Income Fund, the Harbour Australasian Equity Fund and the Harbour Australasian Equity Focus Fund currently invest directly into wholesale funds managed by us (Harbour Wholesale Funds).

These Harbour Wholesale Funds also charge, as applicable, management fees, fund administration, supervisor, legal, audit and any other permitted costs separately within each wholesale fund. The management fee (in some cases net of any fund administration and supervisor costs notionally attributable to a wholesale fund (“net management fee”)), charged by a Harbour Wholesale Fund is fully rebated back to each Fund to ensure that you are only charged once for the management fee or net management fee (as the case may be).

The fees of the Harbour Wholesale Funds are dependent upon their total level of funds under management (FUM), so the fees charged by these wholesale funds will reduce as a percentage if their FUM grows, or will increase as a percentage if their FUM decreases.

As at the date of this document, the estimate fees incurred by investing in underlying Harbour Wholesale Funds are as follows:

Harbour Australasian Equity Income Fund – 0.09%

Harbour Australasian Equity Fund – 0.04%

Harbour Australasian Equity Focus Fund – 0.08%

Harbour NZ Core Fixed Interest Fund – 0.00%

Performance based fees

The performance fees disclosed in the PDS include estimates of any performance fee charged by the Fund or any related underlying funds.

Harbour Australasian Equity Focus Fund – performance-based fee

As stated in the PDS, the Harbour Australasian Equity Focus Fund currently invests into the Wholesale Australasian Equity Focus Fund to gain exposure to Australasian equities. We may be paid a performance fee in respect of the Wholesale Fund subject to the following criteria being met. A performance fee will only be paid in the Wholesale Fund if outperformance is achieved and the High Water Mark (HWM) unit price is exceeded.

At the date of this document, we have estimated the performance fee for the next 12 months to be 0.12% (plus GST, if any). We have taken the average of performance fees paid over the past 5 years to estimate what the performance fee may be for the year ended December 2025. The actual performance fee may be higher or lower than this estimate depending on relative performance of the Fund for the remainder of the calendar year.

Below is more information on how the performance-based fee is calculated. If a performance fee is payable to us by the Wholesale Fund, this will be reflected in the unit price of the Harbour Australasian Equity Focus Fund.

This will affect your returns for this Fund.

Outperformance is achieved if the Wholesale Fund’s unit price return (with any performance fee accrual added back) is greater than the return of the Wholesale Fund’s performance fee benchmark, plus an additional hurdle of 1% pa (calculated and accrued within the daily unit price). Allowance is made for cashflows in and from the Wholesale Fund when determining both the Wholesale Fund’s return and the benchmark return.

The Wholesale Fund's performance fee benchmark is a composite index of 50% of the S&P/NZX 50 Net Index (does not include imputation credits) and 50% of the S&P/ASX 200 Index (which is 50% hedged into NZ dollars).

The HWM unit price is exceeded if the Wholesale Fund's unit price, on 31 December of any year, is greater than the Wholesale Fund's current HWM unit price.

The latest month end unit price for the Wholesale Fund can be found on <https://www.harbourasset.co.nz/performance/industry-professionals-dashboard>. The first HWM was the unit price on the 10 April 2014 (when the Fund first launched). Subsequently, the HWM is perpetual and will only ever be reset to a higher unit price if a performance fee is payable to us, in which case the new HWM will be the Wholesale Fund's unit price on the day the performance fee is calculated as being payable to us. The HWM was reset on 1 January 2016, 1 January 2018, 1 January 2021 and again on 1 January 2022. The benchmark was also reset at these times.

The performance fee comprises 10% of the outperformance (plus GST, if any). The performance fee is capped at 10% of the outperformance. That is, the maximum performance fee that we can be paid is 0.90% ((10% outperformance cap less 1% benchmark hurdle) x 10% performance fee = 0.90%).

In the event and to the extent that the Harbour Australasian Equity Focus Fund does not invest into the Wholesale Fund, we retain the ability to charge a performance fee in respect of the Harbour Australasian Equity Focus Fund on the same basis as set out above for the Wholesale Fund.

The performance fee is accrued and adjusted on a daily basis and paid in arrears, at the end of each calendar year. Please note that as the performance fee is a daily accrual within the unit price, investment performance will differ depending on the date of your investment and the unit price invested on.

We may, with the Supervisor's prior approval (not to be unreasonably withheld), alter the basis for charging our management fees for the Funds and performance fee in respect of the Harbour Australasian Equity Focus Wholesale Fund in accordance with the Trust Deed.

Harbour Long Short Fund – performance-based fee

As stated in the PDS, we may be entitled to a performance fee within the Harbour Long Short Fund, which would be paid annually, following 31 December, subject to outperforming the S&P/NZX Bank Bills 90-Day Index (the Hurdle Rate) plus 2% and the HWM. The performance fee is 15% of the Fund's return above the Hurdle Rate (plus GST, if any).

At the time of writing this document, we have estimated the performance fee for the next 12 months to be 0.23%. We have taken the average of performance fees paid over the past 5 years to estimate what the performance fee may be for the year ended December 2025. The actual performance fee may be higher or lower than this estimate depending on relative performance of the Fund for the remainder of the calendar year.

The performance fee is payable to Harbour only if there is a positive difference between the net asset value of the Fund at the end of the year (31 December), adjusted by adding back any accrual for performance fees during the relevant period.

The HWM, which is the base unit price used to measure performance, is a perpetual HWM and is only ever reset when a performance fee is paid.

The performance fee calculation resets upon payment, starting with the unit price as at 31 December as the new HWM for the future period.

We may with the Supervisor's prior approval (not to be unreasonably withheld), alter the basis for charging our management fees for the Funds and performance fee in respect of the Harbour Long Short Fund in accordance with the Trust Deed.

Additional fees, costs and reimbursements

Reimbursement of expenses

In addition to the total annual fund charges, Harbour or the Supervisor may charge to the Fund, or reimburse from the Fund, any costs or expenses properly and reasonably incurred in connection with carrying out their duties under the Trust Deed.

Transaction costs

Transaction costs are the actual costs of buying and selling investments, such as brokerage fees, custody transaction costs, and spreads, including those costs incurred by underlying funds. These are not included when determining the fees disclosed in the PDS. They are instead incurred by the relevant Fund and will affect all unit holders in proportion to their investment.

Custody transaction costs are included when determining the fees disclosed in the PDS for the Harbour T. Rowe Price Global Equity Fund, Harbour T. Rowe Price Global Equity Fund (Hedged), Epoch Global Quality Select Equity Fund, and Epoch Global Quality Select Equity (Hedged) Funds.

Buy-Sell spread

In some market conditions, it may be in the best interests of existing unit holders in Harbour Funds that we apply a buy-sell spread to investments coming into a Fund or withdrawals from a Fund. This is because both an investment and withdrawal incur transaction costs as cash invested is used to purchase securities or securities are sold to provide cash for withdrawal. Under normal conditions, transaction costs are considered to be minimal, however, they can increase or decrease without notice. This may happen for various reasons, including but not limited to, when markets are more volatile than usual, where the value of the fund is small in comparison to cash flows, or where cash flow volumes are high relative to the liquidity of the underlying investments. To make sure these transaction costs are equitably borne by the investor who is transacting and not passed onto other unitholders in the Fund, a spread may be applied to the price of your investment or redemption.

The buy or sell spread is retained by the applicable Fund in association with estimated transaction costs. Harbour does not receive any benefit from applying buy and sell spreads. We may apply buy sell spreads for all Harbour Funds. Please refer to the [Harbour website](#) for further information including the buy-sell spreads which may be implemented in respect of Harbour's Funds from time to time.

8. Information on other relevant policies

Further to the policies outlined in the SIPO (which can be found on the scheme register on Disclose), we regard the following policy as relevant to investors in the Harbour Investment Funds:

Conflicts of interest policy

Actual or perceived conflicts of interest for directors and employees of FirstCape Group companies can arise from any competing interests. For example, directors and employees of FirstCape Group companies may invest in Harbour funds from time to time. Decisions made by directors or employees may be influenced by their investment in Harbour funds. Directors and employees are required to disclose conflicts of interest and there are processes for recording and managing these conflicts.

FirstCape Group companies' employees are required under the terms of their individual employment agreements to disclose and register potential or actual conflicts of interest to FirstCape so that these can be effectively managed.

Directors are required to disclose conflicts of interest at the beginning of each meeting, and these are recorded in the meeting minutes.

We may use related parties to provide services to the Funds, including staffing services and banking facilities and services. All related parties services are conducted on arms' length commercial terms (as if the parties were independent) and follow the rules on related party transactions that apply to Managed Investment Schemes under the FMC Act.

For more information on related-party transactions under the FMC Act go to [150224-information-sheet-Related-party-transactions-under-the-Financial-Markets-Conduct-Act-2013.1.1.pdf](#).

9. Taxation

This section briefly summarises the income tax regime as it applies to the Funds as at the date this Document was prepared. It is intended as a general guide only and you should seek your own tax advice prior to investing. Tax law changes frequently and you should not assume that this treatment will continue to apply throughout the time that you may hold units in the Funds.

In this Taxation section, references to 'resident' or 'residency' mean to 'tax resident' or 'tax residency' (and non-resident means not tax resident).

Portfolio Investment Entities

Returns to unit holders will be affected by tax laws. The Funds are multi-rate PIEs (a form of Portfolio Investment Entity referred to as PIEs) as defined in the Income Tax Act 2007. If the Funds fail to keep the multi-rate PIE status, the tax treatment will differ from that set out below (and the result may be adverse to a unit holder). The Funds have not elected to be foreign investment PIEs.

The tax regime applicable to a multi-rate PIE provides that all taxable income, losses and tax credits related to a Fund's investments must be attributed to you in proportion to your daily unit holdings in a Fund, with tax payable at your prescribed investor rate (PIR) on your proportionate share.

You must provide your IRD number, your applicable PIR and other details to us (care of your service provider) on your application form. You will be asked each year to confirm your PIR. If you do not provide a valid IRD number and/or a PIR, your attributed income will be taxed at the default rate of 28%. To determine your PIR, go to www.ird.govt.nz/toii/pir/workout/.

The tax payable by a Fund on the net income attributed to you for any given period will depend on the net income attributed to you for that period and your PIR. A Fund will cancel units (or may adjust a distribution) to account for a tax liability paid in relation to a unit holder and may issue additional units to account for any tax credit the Fund receives from Inland Revenue in relation to a unit holder.

Taxable income is attributed annually to 31 March or at any time you make a withdrawal from a Fund. Tax is paid to the Inland Revenue by our administration manager, Apex Investment Administration (NZ) Limited (Apex).

If you make a full withdrawal or transfer from a Fund, any tax liability on the Fund's net income attributable to your investment will be deducted from the balance withdrawn or transferred. If you withdraw a portion of your investment during the year, this results in tax being attributed to you in proportion to the amount you have withdrawn. For individuals who have provided us with the correct PIR and IRD number, the tax paid on income attributed to you by the Fund will be a final tax

and you will not need to include the income attributed to you in a tax return. You must notify us if your PIR changes or if you cease to be a New Zealand resident.

Inland Revenue can instruct us to apply a different PIR to the one notified by you. If Inland Revenue notifies us of your corrected PIR, we must begin to use that rate as soon as practicable. Inland Revenue will also advise you that they have given us the correct PIR (and therefore your PIR has changed). Should you disagree with the PIR provided by Inland Revenue, you are able to provide us with an updated PIR and this will be used when calculating your tax payable.

If the rate applied to your PIE income is lower than your correct PIR you will be required to pay any tax shortfall as part of the income tax year-end process. If the rate applied to your PIE income is higher than your PIR any tax over-withheld will be used to reduce any income tax liability you may have for the tax year and any remaining amount will be refunded to you by Inland Revenue.

You should note that both we and the Supervisor have broad powers to act at our discretion to ensure that the Funds remain eligible to be multi-rate PIEs. This includes, for example, the ability to refuse investment or to compulsorily withdraw all or part of your unit holding where continued investment may prejudice a Fund's multi-rate PIE eligibility.

If you are a retail investor investing through a PIP or custodial service, the PIP or custodial service will hold your units in the Fund. Taxable income attributed to the PIP or custodial service generally has tax deducted at 0% and the PIP or custodial service is responsible for attributing tax to investors.

Distributions and withdrawals from the Funds are not separately taxable, even where you receive an amount in excess of the original cost of the units (however, a withdrawal potentially triggers an attribution of taxable income for the current year).

Taxation legislation and rates of tax change. You should always seek independent professional tax advice that is specific to your own personal circumstances.

Taxation of share investments

Provided that the Funds are PIEs, any capital gains made by the Funds in respect to shares in New Zealand resident companies and certain Australian resident listed companies will be excluded from the calculation of taxable income. Dividends received in relation to these shares are taxable.

Shares in Australian resident listed companies that are not taxed on the dividends basis described above and most other shares in foreign companies will be taxed pursuant to the fair dividend rate (FDR) calculation method. Under FDR, the Funds will be deemed to have derived taxable income equal to 5% of the opening daily market value of the relevant shares for a tax year. Any dividends, distributions or disposal gains flowing from those shares will not be separately taxed in New Zealand under FDR.

Any losses in respect of those overseas shares to which FDR applies will not give rise to a deduction, for income tax purposes, for the Funds.

Foreign shares offering guaranteed or fixed rate returns generally will be taxed under the comparative value method (i.e. the actual gain or loss for the year). Any losses arising are deductible for tax purposes.

Taxation on income derived by the Funds

Other income of the Funds will be subject to the relevant normal tax rules.

Interest earned by the Funds, foreign exchange gains from non-New Zealand dollar denominated debt instruments and income derived from hedging contracts are taxable. The Funds are entitled to

a deduction for expenses incurred in earning their income, and for any foreign exchange and hedging contract losses from non-New Zealand dollar denominated debt investments.

Foreign tax

Tax may be imposed in overseas jurisdictions in relation to overseas investments (although this may give rise to a tax credit in New Zealand).

For more information on PIEs including for non-resident investors, please visit the Inland Revenue website: www.ird.govt.nz/toii/pir/workout/.

10. Investing through service including platforms

The Harbour Investment Funds are offered either directly with Harbour or through several services. These include investing with a custodial service or PIP which is a consolidated custodial account. When you invest through a platform, you do not hold units in the Funds directly. Instead, your units are held in the name of a custodial entity for the platform on your behalf. This means many of the legal rights attaching to those units are held by that custodial entity rather than by you, and so your ability to exercise those rights is subject to the terms and conditions agreed between you and the provider of the service. You are encouraged to familiarise yourself with those terms and conditions as set out in service provider's marketing and legal documentation.

11. Risks

Key risks have been disclosed in the PDS; these are included below as well as risks supplemental to the PDS. You should carefully consider the following risk factors which may adversely affect investment returns and your ability to recover money invested in a Fund.

The main risks that you face are that you may not receive the returns that you expect, that the capital value of your investment may end up less than originally invested (or may be lost in full), or that you may be unable to get your money back or fully realise your investment in the Fund when you need it. We believe that the circumstances which produce these risks can be classified into three main areas:

- A. Manager-specific risks
- B. Fund-specific risks
- C. General risks

We outline these in further detail below:

A. **Manager-specific risks**

Manager-specific risk relates to us as a company and the risks around how we manage and operate our business, including the making of investment decisions. These risks which are outlined below will differ from other fund managers.

Company-specific risk: Your investment in a Fund may be affected by unexpected changes in our operations, ownership structure, business environment or if we become insolvent.

Key personnel: The performance of investments will depend to some extent on the quality of management of a Fund and its assets. Our ability to provide investment management services for a

Fund is linked to key professionals whose departure could negatively impact on the performance of the Fund.

Service provider risk: You could be adversely affected if any of the parties involved in the operation of a Fund, including the Supervisor, us, or the underlying administration managers and/or auditors fail to perform their obligations.

B. Fund-specific risks

Fund-specific risk relates to each Fund's investment style (i.e. how we manage each Fund) and the risks the Funds face due to the underlying securities that each Fund invests in. As a result, each Fund has a different risk profile.

Investment manager risk: How we choose to allocate each Fund's investments between investment sectors and individual investments from time to time (and the investment decisions made by any appointed external investment managers) will affect that Fund's returns, along with the performance of the businesses underlying the investments. In particular, our investment style may result in our returns differing from any share market index and from competing investments.

Interest rate risk: The market value of the securities in Funds with an allocation to fixed interest can change due to changes in interest rates. The market value of fixed interest securities can fluctuate with relatively small changes in interest rates. This sensitivity depends on the starting level of interest rates, the maturity date of the security and the level of coupon or dividend paid.

Currency risk: A number of the Harbour Funds may be invested in jurisdictions outside New Zealand and their returns may be affected by changes in the value of the foreign currency relative to the New Zealand dollar. We may seek to mitigate this risk through currency hedging. See the SIPO for more information about each Fund's currency management processes.

Concentration risk: For the Australasian Equity Focus Fund, this Fund has a concentrated portfolio, meaning we will have large positions in companies that our investment team rate highly. This Fund is not as diversified as our other Funds on a number of holdings basis. This introduces a higher level of risk to the Fund.

Derivative risk: Some Harbour Funds may invest in derivatives. These are financial instruments whose value is derived from an underlying asset, rate, index, or commodity. The risks associated with derivatives are that their value can change in response to changes in an interest rate, foreign exchange rate, asset price or credit rating, the effect of any changes in value of the underlying asset can be amplified, counterparty risk (described below), and divergence between the derivative and the underlying asset. We mitigate these risks by monitoring our use of derivatives to make sure they're in line with the limits set in the SIPO and credit assessments of counterparties, and monitoring to minimise tracking differences.

Counterparty and default risk: A counterparty to a contract may fail to meet their obligations under it, causing loss to any of the Funds. This potentially arises with various securities including derivatives and fixed interest.

Liquidity risk: Some investments may not be readily realisable and converted into cash with little or no loss of capital and minimum delay, because of either inadequate market depth for the trading of the investment in the secondary market or disruptions in the marketplace for the investment.

Securities of small market capitalisation companies in particular may from time to time, and especially in falling markets, become less liquid and the investment may not be able to be realised.

All Harbour Funds are exposed to liquidity risk to some degree, but some Funds may invest into assets that exhibit poor liquidity such as sub-investment grade bonds and loans, unlisted equity, unlisted property, private credit, or unrated bonds of investment grade quality. There may be times when we may not easily change exposure levels if the Fund size changes and in extreme circumstances may constrain the ability of investors to exit their full holdings of units. See the SIPO for more information about the eligible investments, and any exposure limits for the Funds.

Tax Risk: The risk that the Fund loses its PIE status altogether. This could affect the returns to all investors as Fund income would be taxed at the corporate tax rate of 28% at the Fund level, rather than at investors' PIRs. There may also be further withholding tax on distributions made by the Fund.

Inflation risk: Inflation risk may impact on real returns. Inflation is the term used to describe a rise of average prices throughout the economy. Put simply, inflation refers to the increased cost of living. There is a risk that if you receive returns from your investment in the Funds that are less than the rate of inflation, you may not be able to buy as many goods and services with your money as when you invested in the Funds.

Risk of not meeting investment objectives: There is no guarantee that any of the Funds will execute or achieve their investment objectives, and such objectives should not be interpreted as a guarantee or assurance of returns. A failure to meet investment objectives would affect each Fund.

Securities lending risks: There are a number of possible risks associated with securities lending due to the ability of the Harbour NZ Index Shares Fund and Harbour Sustainable NZ Shares Fund to implement a securities lending programme. These are outlined below:

- **Borrower credit risk and settlement risk:** There is a risk that a borrower of securities fails to deliver equivalent securities on termination of a loan. For example, it may become insolvent and therefore unable to acquire the relevant securities for delivery. A delay in, or failure in respect of, redelivery of securities may cause the Fund to incur a loss of revenue and/or securities as a result. In any stock lending arrangement, the borrower of stock would be required to provide collateral of a high quality and liquidity. The collateral would be used to purchase replacement securities, should the borrower fail to deliver securities on the termination of the loan.
- **Legal risk:** There is a risk that the contract relating to the lending will not be legally enforceable or documented correctly, resulting (for example) in an inability to enforce an obligation to retransfer securities. This risk can be mitigated by the use of a standard form contract based on industry standards. In order to limit a Fund's exposure to the risk that may arise as a result of securities lending, we have agreed with the Supervisor that at the time and immediately after lending any securities in a Fund no more than 20% of the value of a Fund or 20% of the aggregate value of any class of security within a Fund may be lent. Securities may not be lent if, as a result, either of those limits is breached.
- **ESG risk:** securities lending is a permitted activity for the Harbour Sustainable NZ Shares Fund and the Harbour Real Estate Investment Fund, because of the possibility of additional revenue for the Funds and where considered to be in the best interests of the Fund. There is a risk that in lending, the borrower is not subject to the same ESG considerations that would be applied by either of the Funds in accordance with the SIPO. Where we deem the long-term value of exercising our voting rights to outweigh the revenue from security lending, we may recall securities on loan. There is a risk that this may not always be possible.

The Harbour Growth Fund, Harbour Balanced Growth Fund, Harbour Balanced Fund, and Harbour

Income Fund may invest into the Harbour NZ Index Shares Fund and Harbour Sustainable NZ Shares Fund.

ESG and Exclusions Risk: Exclusions consistent with Harbour’s Environmental, Social and Governance (ESG) strategy may give rise to performance deviations against each Fund’s applicable benchmark.

Harbour uses external screening providers to monitor excluded activity by underlying portfolio investments. The information obtained by external providers may not always be complete. While additional research is conducted by Harbour in these situations, there are limits to available information. It is expected that this risk will reduce with time, as additional reporting requirements under climate change reporting or other regulatory reporting requirements relating to ESG considerations are enacted and reporting improved.

ESG exclusions apply across all internally managed Harbour funds aside from the NZ Index Shares Fund which aims to closely track its benchmark. They do not apply to derivatives/collective investment vehicles (e.g. ETFs, futures, options) which may be held by some Funds according to their investment guidelines. They do not apply to Funds that are managed by external managers, however those external managers are assessed during the appointment process for their alignment with our exclusions policy. These managers are then monitored and consulted where appropriate on a best-efforts basis for any contentious holdings that may result from any differences in policy.

Additional exclusions apply to the Harbour Sustainable NZ Shares Fund, Epoch Global Quality Select Equity Fund, Epoch Global Quality Select Equity Fund (Hedged), Harbour T. Rowe Price Global Equity Fund and the Harbour T. Rowe Price Global Equity Fund (Hedged) that are detailed in our [ESG Policy](#). We also accommodate other ethical values clients hold in tailored solutions through segregated mandates.

Operational risk: The risk of errors in record keeping, accounting, unit pricing or custodial errors by the external registry and custodial service provider.

Market risk: Investment returns will be affected by the performance of the investments chosen for that Fund, which may be affected by the performance of the investment markets generally (market risk). Market risk includes movements in the general price level, demand and supply in the market in which the relevant investments are made, the sector(s) in which the investments are made, and economic and regulatory conditions, including market sentiment, inflation, interest rates, foreign exchange rates, employment, political events, environmental and technological issues, and consumer demand internationally and in New Zealand and Australia.

Limited performance track record: Some of the Funds that Harbour offers under this Scheme have a limited performance track record as the Funds have been in existence for less than 5 years. For more information on the start date of each Fund please refer to Section 2 “Funds”.

Distribution risk: The Harbour NZ Core Fixed Interest Fund, Harbour NZ Corporate Bond Fund, Harbour Australasian Equity Income Fund, Harbour Income Fund, Harbour Balanced Growth Fund, Harbour NZ Index Shares Fund, Harbour Sustainable NZ Shares Fund and Harbour Real Estate Investment Fund intend to pay distributions. A change in market conditions or distribution policy could result in a change in the actual distribution amount. No amount is promised or guaranteed.

Short-selling risk: Specific to the Harbour Long Short Fund, the Fund will have the ability to short-sell shares. Shorting shares involves borrowing the shares from a third party in order to be able to deliver on settlement date and then selling the security in the market. The intention when short-selling is that when the share price falls, the Fund would buy them back at a lower price, therefore making a profit.

In theory, the upper limit on a share price is unlimited, hence the potential loss from short-selling, and the consequent effect on Fund returns is also unlimited. In certain circumstances, the lender of shares who we have borrowed from to facilitate settlement, may request return of their shares which would require the Fund to buy back the shares in market at a time not of our choosing which may result in potential losses.

The Harbour Income Fund may invest into the Harbour Long Short Fund.

Stock lending risk: Specific to the Harbour Long Short Fund, to facilitate the settlement of the shares the Fund has short sold, we are required to borrow shares from a counterparty. This counterparty often requires the Fund to post collateral in the form of cash or securities. This collateral acts as a form of guarantee that the shares borrowed by the Fund will be returned. The amount of the collateral can vary from time to time. The lender has the right to sell or lend the collateral to other parties. The Fund is exposed to the creditworthiness of the lender in returning the collateral back if an adverse event occurred and may negatively affect returns if we were unable to obtain that collateral.

The Harbour Income Fund may invest into the Harbour Long Short Fund.

How we manage (mitigate) risks

The risks you face as an investor into managed funds will vary from Fund to Fund, depending on the investment objective and underlying investments of each Fund. Generally, to earn a higher return in the long term, an investor is required to accept a higher degree of risk to generate that desired return.

You and your financial adviser can determine the most appropriate Fund or mix of Funds to help achieve your investment objectives, with respect to the risk factors mentioned in the previous section.

In managing your investment, we are aware of these risks and believe the following factors can help manage some of these potential risks you face as a unit holder in a Fund.

A well-resourced and experienced team

We offer a team of experienced and proven investment professionals that have extensive experience in managing money in global and Australasian markets. The senior members of the equity team worked together for over 10 years at a global investment management firm prior to establishing Harbour. Our portfolio managers, who invest and manage the money, have an average of over 20 years' investment experience. This individual and collective experience has navigated client portfolios through changing economic and market conditions. This enables us to focus on client outcomes and provide you with competitive long-term returns.

Sound investment philosophy

Our investment philosophy is focused on consistency – in combining fundamental analysis with the skill of experienced people.

Consistent investment process

The years of experience and lessons learned over many market cycles has helped us craft a robust and disciplined investment process. Our combination of quantitative macro-economic and fundamental analysis across both equity and fixed interest markets is dedicated to producing superior investment results for you. We manage the investment strategy within clearly defined investment parameters to provide you with transparency of how your investment portfolio is managed.

Careful process when selecting external managers

Harbour chooses to utilise external investment managers to expose our investors to areas of the market where we believe it is beneficial to have an allocation, but where we do not have the expertise to manage the funds directly. We follow our External Manager Selection and Monitoring Policy when appointing and monitoring investment managers. This policy covers:

- Investment management governance,
- Investment manager selection and appointment, and
- Investment manager monitoring and compliance.

Governance & controls

The Harbour business operates within a framework of strong governance that is overseen by an experienced Board which includes at least two independent directors. This oversight, along with what we believe is a world leading back-office administration and compliance system, helps mitigate company specific risks and investment operation risks.

Further information on our corporate governance and controls can be found on our website at www.harbourasset.co.nz.

12. Financial statements and auditor's report

Financial statements for the Funds are available on the scheme register on the Disclose website <https://disclose-register.companiesoffice.govt.nz/>.

The Funds all have 30 June balance dates. The Funds' financial statements for the most recent accounting period will be uploaded to the scheme register by 31 October that year.

The Funds' financial statements are audited by PricewaterhouseCoopers, a qualified auditor. The auditor's report on the financial statements will accompany the financial statements uploaded to the scheme register each year.

13. No Guarantee

No person, including FirstCape or Guardian Trust guarantees the repayment of units in the Harbour Investment Funds or the payment of any earnings or returns on any unit in the Funds.

14. Material contracts

Below is a summary of the contracts we believe are relevant in relation to the Harbour Investment Funds.

Outsourced Fund Administration Agreement

Harbour has employed the services of Apex to provide specialist account administration for third party mandates, and custody and administration services for the Harbour Wholesale Funds, and the Harbour Investment Funds.

The services that Apex provides to Harbour include:

- An independent accounting system where trades, positions and corporate actions are recorded. Harbour uses the portfolio valuations as a basis for managing the portfolios.
- Liaising with custodians to ensure the settlement of trades and where there are problems ensuring they are resolved.
- Daily and monthly reconciliation of third-party custodian records to the Apex accounting records.
- Act as a central point for the advice and processing of corporate actions.
- Monthly reporting of performance and portfolio valuations and other required reports.
- Unit pricing and custody of assets for the range of Harbour Investment Funds and Harbour Wholesale Funds.
- Registry function for the Funds.

Apex provides an annual Internal Controls Report, which includes an Independent Assurance Report in accordance with International Standard on Assurance Engagements (New Zealand) 3402.

Trust Deed

The Funds are constituted within a registered scheme called the “Harbour Investment Funds” which is governed by the Harbour Asset Management Limited Trust Deed restated on 21 September 2016.

The Trust Deed governs the Funds. The Trust Deed, together with the supplemental conditions of establishment, are available on the Disclose Register.

15. Deferral and suspension of withdrawals

If a withdrawal request, or a series of withdrawal requests, in respect of the Funds are received within a period of three months that relate to more in total than 2.5% of the number of units on issue at the time of the request or the last request, and we consider it is in the general interests of all unit holders in the Funds to defer immediate withdrawal of the total units requested in accordance with the Trust Deed, we may defer immediate withdrawal of the total units requested, and withdraw those units by instalments over a period determined by us or in total at the expiration of a period determined by us. There is no limit to the period we may determine.

Where such requests, within a three-month period, relate to more than 10% of the number of units on issue in the Funds at the time of request or last request, we may, on notifying the Supervisor, suspend the right of unit holders in the Funds to make withdrawal requests.

We may also suspend withdrawal requests where we determine the withdrawal is not practicable, would or may be prejudicial to the general interests of unit holders in the Funds, or is not desirable for the protection of the Funds (for example, if it would threaten the Funds' status as a PIE). There is no limit to the suspension period the Supervisor may agree to.

Disclaimers

MSCI indices

For the MSCI indices (including the MSCI World Index) the relevant licence agreement requires the use of the following disclaimer:

Source: MSCI. The MSCI data is comprised of a custom index calculated by MSCI for, and as requested by, Harbour Asset Management Limited. The MSCI data is for internal use only and may not be redistributed or used in connection with creation or offering any securities, financial products or indices. Neither MSCI nor any other third party involved in or related to compiling, computing or creating the data (The MSCI Parties) makes any express or implied warranties or representations with respect to such data (or the results to be obtained by the use thereof), and the MSCI Parties hereby expressly disclaim all warranties or originality, accuracy, completeness or fitness for a particular purpose with respect to such data. Without limiting any of the foregoing, in no event shall any of the MSCI Parties have any liabilities for any direct, indirect, special, punitive, consequential or other damages (including lost profits) even if notified of the possibility of such damages.

Global Industry Classification Standard

The Global Industry Classification Standard (“GICS”) was developed by and is the exclusive property and a service mark of MSCI Inc. (“MSCI”) and Standard & Poor’s, a division of The McGraw-Hill Companies, Inc. (“S&P”) and is licensed for use by Harbour Asset Management Limited. Neither MSCI, S&P nor any third party involved in making or compiling the GICS or any GICS classifications makes any express or implied warranties or representations with respect to such standard or classification (or the results to be obtained by the use thereof), and all such parties hereby expressly disclaim all warranties of originality, accuracy, completeness, merchantability and fitness for a particular purpose with respect to any of such standard or classification. Without limiting any of the foregoing, in no event shall MSCI, S&P, any of their affiliates or any third party involved in making or compiling the GICS or any GICS classifications have any liability for any direct, indirect, special, punitive, consequential or any other damages (including lost profits) even if notified of the possibility of such damages.

Bloomberg Indices

“Bloomberg®” and the Bloomberg indices listed herein (the “Indices”) are service marks of Bloomberg Finance L.P. and its affiliates, including Bloomberg Index Services Limited (“BISL”), the administrator of the index (collectively, “Bloomberg”), and have been licensed for use for certain purposes by the distributor hereof (the “Licensee”).

The financial products named herein (the “Products”) are not sponsored, endorsed, sold or promoted by Bloomberg. Bloomberg does not make any representation or warranty, express or implied, to the owners of or counterparties to the Products or any member of the public regarding the advisability of investing in securities or commodities generally or in the Product particularly. The only relationship of Bloomberg to Licensee is the licensing of certain trademarks, trade names and service marks and of the Indices, which are determined, composed and calculated by BISL without regard to Licensee or the Products. Bloomberg has no obligation to take the needs of Licensee or the owners of the Products into consideration in determining, composing or calculating the Indices. Bloomberg is not responsible for and has not participated in the determination of the timing, price, or quantities of the Products to be issued. Bloomberg shall not have any obligation or liability, including, without limitation, to customers of the Products, in connection with the administration, marketing or trading of the Products.

S&P Dow Jones Indices LLC disclaimer

S&P Dow Jones Indices LLC disclaimer

Copyright © 2025, S&P Dow Jones Indices LLC. All rights reserved. The S&P Dow Jones Indices LLC index(es) and associated data are a product of S&P Dow Jones Indices LLC, its affiliates and/or their licensors (“S&P DJI”) and has been licensed for use by Harbour Asset Management Limited. Redistribution or reproduction in whole or in part in any form is prohibited except with the prior written permission of S&P DJI. S&P DJI does not guarantee the accuracy, adequacy, completeness, or availability of any information and is not responsible for any errors or omissions, regardless of the cause or for the results obtained from the use of such index(es) and associated data. S&P® is a registered trademark of S&P Global, Inc. or its affiliates and Dow Jones® is a registered trademark of Dow Jones Trademark Holdings LLC (“Dow Jones”). S&P DJI, DOW JONES, THEIR AFFILIATES, AND LICENSORS DISCLAIM ANY AND ALL EXPRESS OR IMPLIED WARRANTIES, INCLUDING, BUT NOT LIMITED TO, ANY WARRANTIES OF MERCHANTABILITY OR FITNESS FOR A PARTICULAR PURPOSE OR USE. In no event shall S&P DJI, Dow Jones, their affiliates or licensors be liable for any direct, indirect, special, or consequential damages, costs, expenses, legal fees, or losses (including lost income or lost profit and opportunity costs) in connection with subscriber’s or others’ use of the S&P DJI index(es) and associated data.

The S&P/ NZX Portfolio Index is a product of S&P Dow Jones Indices LLC or its affiliates (“SPDJI”) and NZX Limited, and has been licensed for use by Harbour Asset Management Limited (Harbour). S&P®, S&P 500®, US 500, The 500, iBoxx®, iTraxx® and CDX® are trademarks of S&P Global, Inc. or its affiliates (“S&P”); Dow Jones® is a registered trademark of Dow Jones Trademark Holdings LLC (“Dow Jones”); NZX are trademarks of NZX Limited and these trademarks have been licensed for use by SPDJI and sublicensed for certain purposes by Harbour. It is not possible to invest directly in an index. Harbour Funds are not sponsored, endorsed, sold or promoted by SPDJI, Dow Jones, S&P, any of their respective affiliates (collectively, “S&P Dow Jones Indices”) or NZX Limited. Neither S&P Dow Jones Indices nor NZX Limited make any representation or warranty, express or implied, to the owners of Harbour’s Funds or any member of the public regarding the advisability of investing in securities generally or in Harbour’s Funds particularly or the ability of the S&P/ NZX Portfolio Index to track general market performance. Past performance of an index is not an indication or guarantee of future results. S&P Dow Jones Indices’ and NZX Limited only relationship to Harbour with respect to the S&P/ NZX Portfolio Index is the licensing of the Index and certain trademarks, service marks and/or trade names of S&P Dow Jones Indices and/or its licensors. The S&P/ NZX Portfolio Index is determined, composed and calculated by S&P Dow Jones Indices or NZX Limited without regard to Harbour or Harbour’s Funds. S&P Dow Jones Indices and NZX Limited have no obligation to take the needs of Harbour or the owners of Harbour’s Funds into consideration in determining, composing or calculating the S&P/ NZX Portfolio Index. S&P Dow Jones Indices and NZX Limited have no obligation or liability in connection with the administration, marketing or trading of Harbour’s Funds. There is no assurance that investment products based on the S&P/ NZX Portfolio Index will accurately track index performance or provide positive investment returns. S&P Dow Jones Indices LLC is not an investment adviser, commodity trading advisory, commodity pool operator, broker dealer, fiduciary, promoter” (as defined in the Investment Company Act of 1940, as amended), “expert” as enumerated within 15 U.S.C. § 77k(a) or tax advisor. Inclusion of a security, commodity, crypto currency or other asset within an index is not a recommendation by S&P Dow Jones Indices to buy, sell, or hold such security, commodity, crypto currency or other asset, nor is it considered to be investment advice or commodity trading advice. SPDJI provides indices that use environmental, social and/or governance (ESG) indicators (including, without limit, business involvement screens, conformance to voluntary corporate standards, GHG emissions data, and ESG scores) to select, weight and/or exclude constituents. ESG indicators seek to measure a company’s, or an asset’s performance, with respect to E, S and/or G criteria. ESG indicators are derived from publicly reported data, modelled data, or a combination of reported and modelled data. ESG indicators are based on a qualitative assessment due to the absence of well-defined uniform market standards and the use of multiple methodologies to assess ESG factors. No single clear, definitive test or framework (legal, regulatory, or otherwise) exists to determine labels such as, ‘ESG’, ‘sustainable’, ‘good governance’, ‘no adverse environmental, social and/or other impacts’, or other equivalently labelled objectives. Therefore, the exercise of subjective judgment is necessary. Different persons may classify the same investment, products

and/or strategy differently regarding the foregoing labels.

NEITHER S&P DOW JONES INDICES NOR NZX LIMITED GUARANTEES THE ADEQUACY, ACCURACY, TIMELINESS AND/OR THE COMPLETENESS OF THE S&P/ NZX PORTFOLIO INDEX OR ANY DATA RELATED THERETO OR ANY COMMUNICATION, INCLUDING BUT NOT LIMITED TO, ORAL OR WRITTEN COMMUNICATION (INCLUDING ELECTRONIC COMMUNICATIONS) WITH RESPECT THERETO. S&P DOW JONES INDICES AND NZX Limited SHALL NOT BE SUBJECT TO ANY DAMAGES OR LIABILITY FOR ANY ERRORS, OMISSIONS, OR DELAYS THEREIN. S&P DOW JONES INDICES AND NZX LIMITED MAKES NO EXPRESS OR IMPLIED WARRANTIES, AND EXPRESSLY DISCLAIMS ALL WARRANTIES, OF MERCHANTABILITY OR FITNESS FOR A PARTICULAR PURPOSE OR USE OR AS TO RESULTS TO BE OBTAINED BY HARBOUR, OWNERS OF THE HARBOUR'S FUNDS, OR ANY OTHER PERSON OR ENTITY FROM THE USE OF THE S&P/ NZX PORTFOLIO INDEX OR WITH RESPECT TO ANY DATA RELATED THERETO. WITHOUT LIMITING ANY OF THE FOREGOING, IN NO EVENT WHATSOEVER SHALL S&P DOW JONES INDICES OR NZX LIMITED BE LIABLE FOR ANY INDIRECT, SPECIAL, INCIDENTAL, PUNITIVE, OR CONSEQUENTIAL DAMAGES INCLUDING BUT NOT LIMITED TO, LOSS OF PROFITS, TRADING LOSSES, LOST TIME OR GOODWILL, EVEN IF THEY HAVE BEEN ADVISED OF THE POSSIBILITY OF SUCH DAMAGES, WHETHER IN CONTRACT, TORT, STRICT LIABILITY, OR OTHERWISE. S&P DOW JONES INDICES HAS NOT REVIEWED, PREPARED AND/OR CERTIFIED ANY PORTION OF, NOR DOES S&P DOW JONES INDICES HAVE ANY CONTROL OVER, THE LICENSEE PRODUCT REGISTRATION STATEMENT, PROSPECTUS OR OTHER OFFERING MATERIALS. THERE ARE NO THIRD-PARTY BENEFICIARIES OF ANY AGREEMENTS OR ARRANGEMENTS BETWEEN S&P DOW JONES INDICES AND HARBOUR, OTHER THAN THE LICENSORS OF S&P DOW JONES INDICES.

BLOOMBERG DOES NOT GUARANTEE THE ACCURACY AND/OR THE COMPLETENESS OF THE INDICES OR ANY DATA RELATED THERETO AND SHALL HAVE NO LIABILITY FOR ANY ERRORS, OMISSIONS OR INTERRUPTIONS THEREIN. BLOOMBERG DOES NOT MAKE ANY WARRANTY, EXPRESS OR IMPLIED, AS TO RESULTS TO BE OBTAINED BY LICENSEE, OWNERS OF THE PRODUCT OR ANY OTHER PERSON OR ENTITY FROM THE USE OF THE INDICES OR ANY DATA RELATED THERETO. BLOOMBERG DOES NOT MAKE ANY EXPRESS OR IMPLIED WARRANTIES AND EXPRESSLY DISCLAIMS ALL WARRANTIES OF MERCHANTABILITY OR FITNESS FOR A PARTICULAR PURPOSE OR USE WITH RESPECT TO THE INDICES OR ANY DATA RELATED THERETO. WITHOUT LIMITING ANY OF THE FOREGOING, TO THE MAXIMUM EXTENT ALLOWED BY LAW, BLOOMBERG, ITS LICENSORS, AND ITS AND THEIR RESPECTIVE EMPLOYEES, CONTRACTORS, AGENTS, SUPPLIERS, AND VENDORS SHALL HAVE NO LIABILITY OR RESPONSIBILITY WHATSOEVER FOR ANY INJURY OR DAMAGES—WHETHER DIRECT, INDIRECT, CONSEQUENTIAL, INCIDENTAL, PUNITIVE OR OTHERWISE—ARISING IN CONNECTION WITH THE PRODUCT OR INDICES OR ANY DATA OR VALUES RELATING THERETO—WHETHER ARISING FROM THEIR NEGLIGENCE OR OTHERWISE, EVEN IF NOTIFIED OF THE POSSIBILITY THEREOF.

Solactive Indices

Solactive AG (“Solactive”) is the licensor of Solactive New Zealand Top 50 Capped Index (including imputation credits) (the “Index”). The financial instruments that are based on the Index are not sponsored, endorsed, promoted or sold by Solactive in any way and Solactive makes no express or implied representation, guarantee or assurance with regard to: (a) the advisability in investing in the financial instruments; (b) the quality, accuracy and/or completeness of the Index; and/or (c) the results obtained or to be obtained by any person or entity from the use of the Index. Solactive does not guarantee the accuracy and/or the completeness of the Index and shall not have any liability for any errors or omissions with respect thereto. Notwithstanding Solactive’s obligations to its licensees, Solactive reserves the right to change the methods of calculation or publication with respect to the Index and Solactive shall not be liable for any miscalculation of or any incorrect, delayed or interrupted publication with respect to the Index. Solactive shall not be liable for any damages, including, without limitation, any loss of profits or business, or any special, incidental, punitive, indirect or consequential damages suffered or incurred as a result of the use (or inability to use) of the Index.